

# Stainless steel ball valves, reduced bore

welding/welding, EN (DIN), DN 10-250

## Properties

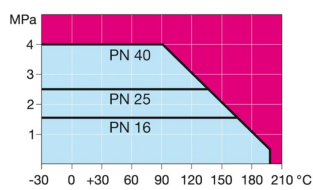
Body:	Stainless steel, EN 10217-7 X2CrNiMo17-12-2 (1.4404)
Ball:	Stainless steel, EN X2CrNiMo17-12-2 (1.4404)
Stem:	Stainless steel, EN X2CrNiMo17-12-2 (1.4404)
Stem seals:	FPM/NBR
Ball seals:	Carbonized PTFE
Operation:	DN 10-100 with stainless steel handle DN 125-250 with galvanized steel handle We recommend manual gear operation for sizes DN200 and larger



## Operating conditions

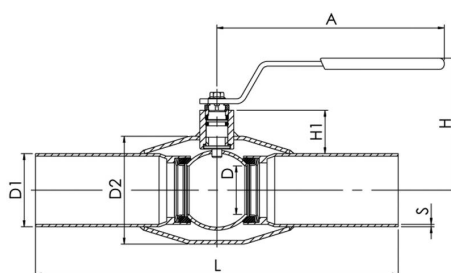
-30°C - +200°C

Below 0 °C contact manufacturer

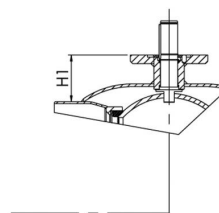


Not for steam

DN 10 - 150



DN 200 - 250



DN	PN	Product no.	D	D1	D2	S	H	H1	A	L	Kv	Kg
10	40	230 010	10	17,2	33,7	2	100	22	140	230	8	0,5
15	40	230 015	10	21,3	33,7	2	100	22	140	230	8	0,5
20	40	230 020	15	26,9	42,4	2	100	23	140	230	14	0,7
25	40	230 025	20	33,7	48,3	2	90	29	150	230	25	0,9
32	40	230 032	25	42,4	60,3	2	95	28	150	260	41	1,2
40	40	230 040	32	48,3	76,1	2	100	35	190	260	65	1,6
50	40	230 050	40	60,3	88,9	2	110	36	190	300	103	2,2
65	25	230 065	50	76,1	114,3	3	160	51	280	300	180	3,9
80	25	230 080	65	88,9	131	3	170	57	280	300	290	4,7
100	25	230 100	80	114,3	156	3	185	55	280	325	470	6,7
125	25	230 125	100	139,7	177,8	3	205	56	420	325	830	11,5
150	25	230 150	125	168,3	219,1	3	240	62	600	350	1150	16
200	25	230 200	150	219,1	273	4	280	92	870	400	1750	32
250	25	230 250	200	273	355,6	4	340	108	1200	530	3200	63