

# Steel ball valves, full bore

welding/welding, EN (DIN), DN 15-500

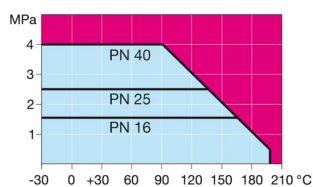
## Properties

Body:	Up to DN 400 Steel, EN 10217-2 P235GH (1.0345) DN 500 Steel, P355 NL1 (1.0566)/GP240GH 1.0619)
Ball:	Stainless steel, EN X5CrNi18-10 (1.4301)
Stem:	Stainless steel, EN X8CrNiS18-9 (1.4305)
Stem seals:	FPM
Ball seals:	Carbonized PTFE
Operation:	DN 10 - 200 with galvanized steel handle DN 250 and larger without handle We recommend manual gear operation for sizes DN200 and larger



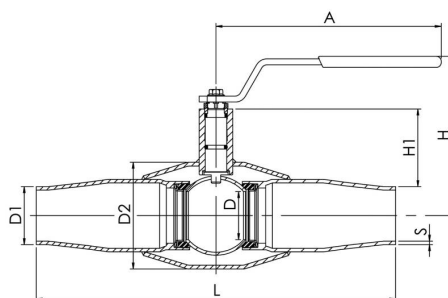
## Operating conditions

-30°C - +200°C  
Below 0 °C contact manufacturer

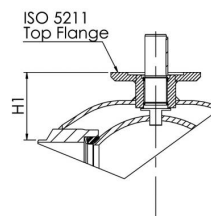


Not for steam

DN 15 - 125



DN 150 - 500



DN	PN	Product no.	D	D1	D2	S	H	H1	A	L	Kv	Kg
15	40	150 015	15	21,3	42,4	2,3	105	26	140	230	14	0,7
20	40	150 020	20	26,9	48,3	2,6	105	43	150	230	25	1
25	40	150 025	25	33,7	60,3	2,6	105	43	150	260	41	1,4
32	40	150 032	32	42,4	76,1	2,6	125	61	190	260	65	1,9
40	40	150 040	40	48,3	88,9	2,9	135	65	190	300	103	2,7
50	25	150 050	50	60,3	114,3	2,9	180	79	280	300	180	4,2
65	25	150 065	65	76,1	139,7	3,2	190	83	280	300	290	5,5
80	25	150 080	80	88,9	168,3	3,6	230	110	280	325	470	8,3
100	25	150 100	100	114,3	177,8	4	245	109	420	325	830	15
125	25	150 125	125	139,7	219,1	4,5	280	117	600	350	1150	22
150	25	150 150	150	168,3	273	5	280	118	870	400	1750	51
200	25	150 200	200	219,1	355,6	5	350	135	1200	530	3200	95
250	25	150 250	250	273	457	5	-	158	-	550	4600	126
300	25	150 300	290	323,9	508	5,6	-	208	-	686	9600	177
350	25	150 350	340	355,6	610	6,3	-	267	-	762	13300	258
400	25	150 400	390	406,4	660	7,1	-	309	-	1100	18700	519
500	25	150 500	489	508	813	7,1	-	325	-	970	45000	920