

Steel ball valves, reduced bore

welding/welding, EN (DIN), DN 300-600

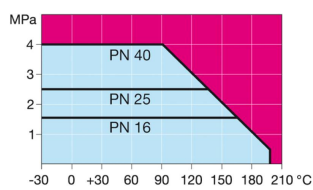
Properties

Body:	Up to DN 500 Steel, EN 10217-2 P235GH (1.0345) DN 600 Steel, P355 NL1 (1.0566)/GP240GH 1.0619
Ball:	Stainless steel, EN X5CrNi18-10 (1.4301)
Stem:	Stainless steel, EN X8CrNiS18-9 (1.4305)
Stem seals:	FPM
Ball seals:	Carbonized PTFE
Operation:	DN 300 - 600 without handle We recommend manual gear operation for sizes DN200 and larger

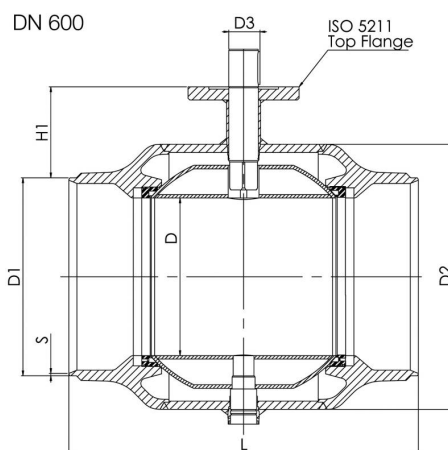
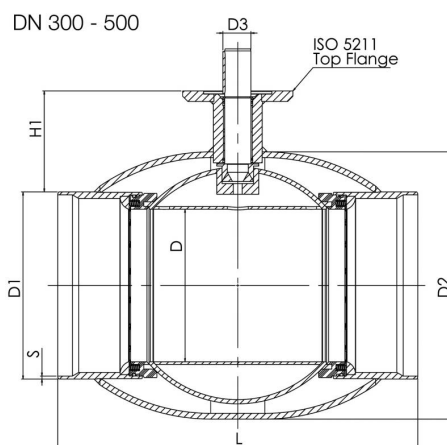


Operating conditions

-30°C - +200°C
Below 0 °C contact manufacturer



Not for steam



DN	PN	Product no.	D	D1	D2	D3	S	H1	L	ISO 5211	Kv	Kg
300	25	100 300	250	323,9	457	50	5,6	133	550	F16	4600	110
350	25	100 350	290	355,6	508	50	5,6	192	686	F16	9600	170
400	25	100 400	340	406,4	610	70	7	242	762	F25	13300	250
500	25	100 500	390	508	660	90	7	259	914	F30	18700	400
600	25	100 600	489	610	813	90	7,1	274	1065	F30	32000	960