

Balancing valves, steel

flange/flange, DN 15-300

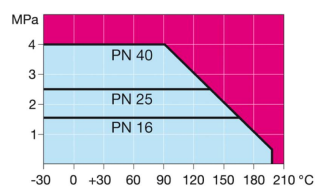
Properties

| | |
|-------------|---|
| Body: | Steel, EN 10217-2 P235GH (1.0345) |
| Ball: | Stainless steel, EN X5CrNi18-10 (1.4301) |
| Stem: | Stainless steel, EN X8CrNiS18-9 (1.4305) |
| Stem seals: | FPM |
| Ball seals: | Hardened PTFE |
| Flanges | EN 1092-1 Available PN 10, 16, 25, 40 |
| Length | DIN 3202 |
| Operation: | DN 15 - 150 with galvanized steel handle DN 200 - 300 with manual gear |



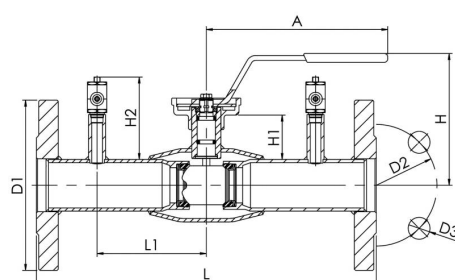
Operating conditions

-30°C - +200°C
Below 0 °C contact manufacturer

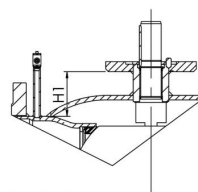


Not for steam

DN 15 - 150



DN 200 - 300



| DN | PN body | PN flanges | Product no. | D1 | D2 | D3 | H | H1 | H2 | A | L | L1 | Holes | Kg |
|-----|---------|------------|-------------|-----|-----|----|-----|-----|-------|-----|-----|-------|-------|------|
| 15 | 40 | 40 | 143 015 | 95 | 65 | 14 | 104 | 21 | 67,8 | 140 | 250 | 60 | 4 | 2,2 |
| 20 | 40 | 40 | 143 020 | 105 | 75 | 14 | 105 | 21 | 67,8 | 140 | 250 | 75 | 4 | 2,6 |
| 25 | 40 | 40 | 143 025 | 115 | 85 | 14 | 105 | 36 | 67,8 | 150 | 250 | 75 | 4 | 3,2 |
| 32 | 40 | 40 | 143 032 | 140 | 100 | 18 | 108 | 37 | 67,8 | 150 | 280 | 90 | 4 | 4,9 |
| 40 | 40 | 40 | 143 040 | 150 | 110 | 18 | 129 | 56 | 87,8 | 190 | 280 | 90 | 4 | 6,2 |
| 50 | 40 | 40 | 143 050 | 165 | 125 | 18 | 135 | 56 | 87,8 | 190 | 320 | 110 | 4 | 8 |
| 65 | 25 | 16 | 143 065 | 185 | 145 | 18 | 180 | 72 | 107,8 | 280 | 320 | 110 | 8 | 10,2 |
| 80 | 25 | 16 | 143 080 | 200 | 160 | 18 | 195 | 78 | 107,8 | 280 | 320 | 110 | 8 | 12 |
| 100 | 25 | 16 | 143 100 | 220 | 180 | 18 | 230 | 99 | 127,8 | 280 | 350 | 122,5 | 8 | 16,8 |
| 125 | 25 | 16 | 143 125 | 250 | 210 | 18 | 248 | 100 | 127,8 | 420 | 350 | 132,5 | 8 | 24 |
| 150 | 25 | 16 | 143 150 | 285 | 240 | 22 | 283 | 106 | 127,8 | 600 | 370 | 145 | 8 | 32,8 |
| 200 | 25 | 16 | 143 200 | 340 | 295 | 22 | - | 72 | 127,8 | - | 425 | 172 | 12 | 60 |
| 250 | 25 | 16 | 143 250 | 405 | 355 | 26 | - | 88 | 127,8 | - | 550 | 225 | 12 | 114 |
| 300 | 25 | 16 | 143 300 | 460 | 410 | 26 | - | 113 | 98,9 | - | 580 | 272 | 12 | 168 |